

2019 Sequoia



Rule every family road trip. The 2019 Toyota Sequoia.

As your family grows, so do your adventures. There are countless new places to explore, experiences to share and memories to create. The 2019 Toyota Sequoia offers seating for up to eight passengers, letting everyone ride in comfort. And the spacious interior helps ensure that everyone's backpacks, bike helmets and outdoor gear can come along for the ride.³ A powerful V8 helps make hauling bikes, trailers and more a breeze.⁴ And when it's time to take the fun beyond the campsite, Sequoia's proven off-road capabilities⁴⁰ can get you there. So let's keep thinking bigger and make this next family outing one to remember.



Limited shown in Shoreline Blue Pearl with available Limited Premium Package.

See numbered footnotes in Disclosures section.



Go more places. See more things.
Enjoy more family adventures in premium
style and safety.



From our performance-fueled family to yours.

At Toyota Racing Development (TRD), our minds are always racing. We've been helping enthusiasts extract more performance from their Toyotas since 1979, and we have no intention of slowing down. We've taken the lessons learned from the racetrack and applied them to our sportiest full-size SUV: the 2019 Sequoia TRD Sport. TRD-tuned springs, Bilstein^{®18} shocks and tuned sway bars deliver on-road performance. And with its unique LED headlights, gloss-black grille with chrome surround and 20-in. TRD Sport black alloy wheels, this truck looks like nothing else on the road. It's all the cool stuff you want — and more — so you can haul more than just family.



TRD Sport shown in Magnetic Gray Metallic.

See numbered footnotes in Disclosures section.



TRD-TUNED SPORT SUSPENSION

Sequoia TRD Sport's unique suspension includes TRD front and rear sway bars and Bilstein®¹⁸ dampers. Tuned by the engineers at Toyota Racing Development, these components work together to give this SUV flatter cornering and a smoother ride.

BLACK TRD SPORT BADGING

Not a showpiece — more like a badge of honor. Exclusive black TRD Sport badging signals to all that this is no ordinary SUV.



TRD Sport shown in Magnetic Gray Metallic.
See numbered footnotes in Disclosures section.



TRD Sport interior shown in Black.

Your living room is about to get jealous.

With Sequoia, everyone gets to ride first class. Available heated and ventilated front seats and available leather-trimmed seating for all help keep everyone riding in comfort and style. The advanced Entune™ Premium Audio with Integrated Navigation¹⁶ and Entune® App Suite¹⁷ system is the ultimate copilot, giving you turn-by-turn directions, a ton of music choices and even help with dinner reservations. An available JBL®²² Premium Audio system lets you hear your music like never before, and rear-seat passengers can catch up on their favorite movies with the available rear-seat Blu-ray Disc™ player.



REAR-SEAT BLU-RAY DISC™ PLAYER

Sequoia's second-row seat will have your kids hoping they're not there yet. That's because they can watch the latest movies or play video games on the available rear-seat Blu-ray Disc™ player with 9-in. display. Plus, all their movies and games will stow tidily away in Sequoia's many storage compartments. And to keep front-seat occupants from feeling left out, Sequoia offers an excellent JBL Synthesis²² audio system with 14 speakers.



ENTUNE™ PREMIUM AUDIO WITH INTEGRATED NAVIGATION¹⁶ AND ENTUNE® APP SUITE¹⁷

Sequoia takes high tech even higher with the available Entune™ Premium Audio system with Integrated Navigation and Entune® App Suite. Need info on your stocks, weather, sports or fuel prices? No problem. Real-time info is included — even your local weather forecast to help you plan your day.



STORAGE COMPARTMENTS

In addition to its vast cargo area and a multitude of cup holders, Sequoia offers a variety of other storage options. The dual-level glove compartment has a large compartment below for oversize items and a smaller compartment above for documents and other flat items.



Platinum interior shown in Red Rock. Options shown.

Your all-in-one cargo solution.

Because there's no such thing as a one-size-fits-all adventure, Sequoia makes it easy to carry gear, family or both.³ The sliding second-row and third-row seats fold flat, making it easy to load and unload the equipment your weekend road trip requires. And the split-fold seat design lets you choose how to store those bigger items: upright or flat. Of course, with its spacious interior, reclining¹⁹ third-row seat and available second-row console, Sequoia is as accommodating to passengers as it is to cargo. So what are you waiting for?



POWER⁴¹ RECLINING¹⁹ AND FOLD-FLAT THIRD-ROW SEAT

When it comes to comfort, the available power reclining and fold-flat third-row seat will make settling in for the long haul as easy as pushing a button.



FRONT-SEAT CONSOLE

The front-seat console on Platinum offers climate control and cup holders for those in the second row. There are also RCA jacks for the rear-seat Blu-ray Disc™ player and a handy 120V AC power outlet.



AUTOMATIC POWER LIFTGATE

Closing the available power liftgate is equally convenient. You can press a button inside the cargo area or on the dash or use the key fob, and it will close automatically.



Platinum interior shown in Red Rock

120 CUBIC FEET OF FAMILY ROOM

Sequoia's big cabin offers much more than just space. There's comfortable seating for up to eight⁴² with the standard third row, and a variety of seating configurations, to handle any combination of passengers and payload. Or fold all the seats flat and reveal 120 cubic feet of cargo capacity³ — perfect for that drum kit, those home improvement materials or that eight-person tent.



Designed for safety.

Toyota Safety Sense™ (TSS)²⁵ is a bundle of active safety features on most new Toyota vehicles at no additional cost. These innovative features were designed to help protect you and your passengers from harm.



PRE-COLLISION SYSTEM²⁶ WITH PEDESTRIAN DETECTION²⁷ (PCS w/PD)

Using an in-vehicle camera and radar to help detect a vehicle or a pedestrian in front of you, the Pre-Collision System with Pedestrian Detection (PCS w/PD) is designed to help you mitigate or avoid a potential collision. If the system determines that a frontal collision is likely, it prompts you to take action using audio and visual alerts. PCS w/PD may apply additional force using Brake Assist.²⁸ If you don't brake in time, it may automatically apply the brakes to reduce your speed, helping to minimize the likelihood of a frontal collision or reduce its severity.



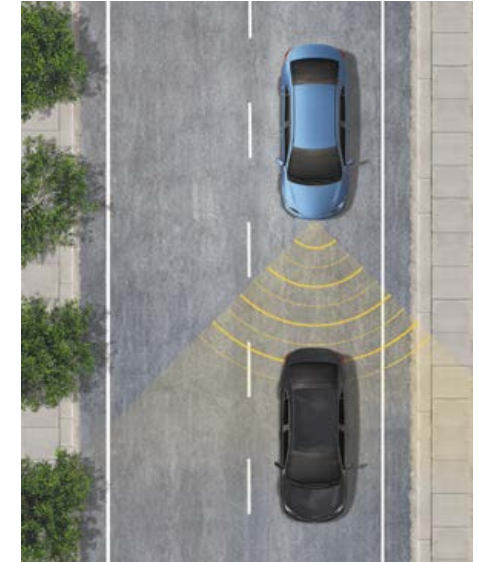
LANE DEPARTURE ALERT (LDA)²⁸ WITH SWAY WARNING SYSTEM (SWS)²⁹

Under certain circumstances, Lane Departure Alert (LDA) with Sway Warning System (SWS) is designed to detect lane departure on roads with visible lane markings. LDA only activates when you're traveling at a speed of 32 mph or above. When you hear and see the alert, after carefully checking the road around you, you should safely direct your vehicle back to the center of your lane.



AUTOMATIC HIGH BEAMS (AHB)³⁰

Automatic High Beams (AHB) are a safety system designed to help you see more clearly at night — without distracting other drivers. Designed to activate at speeds above 25 mph, AHB rely on an in-vehicle camera to help detect the headlights of oncoming vehicles and taillights of preceding vehicles, then automatically toggle between high and low beams accordingly to provide the appropriate amount of light. By using high beams more frequently, the system may allow earlier detection of pedestrians and obstacles.



DYNAMIC RADAR CRUISE CONTROL (DRCC)³¹

Intended for highway use and similar to “constant speed” cruise control, Dynamic Radar Cruise Control (DRCC) is designed to let you drive at a preset speed. DRCC uses vehicle-to-vehicle distance control, which adjusts your speed, to help you maintain a preset distance from vehicles ahead of you that are driving at a slower speed. DRCC uses a front-grille-mounted radar and an in-vehicle camera designed to detect vehicles and their distance. If a driver is traveling slower than you, or within your preset range, DRCC will automatically slow your vehicle down without deactivating cruise control. If DRCC determines you need to slow down more, an audio and visual alert notifies you and brakes are applied. When there's no longer a vehicle driving slower than your set speed in front of you, DRCC will then accelerate to your preset speed.

You planned your trip. We planned your return.

With Sequoia, one thing you'll never leave behind is peace of mind. Sequoia is equipped with an array of active safety features to help you avoid trouble and passive safety features to help protect you if trouble proves unavoidable — such as Dynamic Radar Cruise Control (DRCC),³¹ which automatically adjusts vehicle speed to help maintain a preset distance between you and the vehicle in front of you. We go to these lengths because, as with any excursion, there's no substitute for preparation.



BLIND SPOT MONITOR (BSM)³⁵ WITH REAR CROSS-TRAFFIC ALERT (RCTA)³⁶

The standard Blind Spot Monitor (BSM) with Rear Cross-Traffic Alert (RCTA) helps you identify vehicles that might be in a blind spot. When you use your turn signal and BSM detects a vehicle, it warns you with a flashing indicator light on the appropriate outside mirror.



ADVANCED AIRBAG SYSTEM³⁴

Not all collisions call for maximum airbag deployment. In certain types of frontal collisions, the standard driver and front passenger Advanced Airbag System is designed to sense impact severity and adjust airbag deployment accordingly.



STAR SAFETY SYSTEM™

Sequoia comes standard with the Star Safety System™, a suite of six advanced safety features designed to help keep drivers out of harm's way. The system includes Vehicle Stability Control (VSC),³² Traction Control (TRAC), Anti-lock Brake System (ABS), Electronic Brake-force Distribution (EBD), Brake Assist (BA)² and Smart Stop Technology® (SST).³³



ADVANCED CONTROL TECHNOLOGIES

An Anti-lock Brake System (ABS) helps prevent brakes from locking up, while the sophisticated Vehicle Stability Control (VSC)³² helps prevent front and rear wheelslip by monitoring your steering angle and comparing it to the direction in which your vehicle is traveling.

3-POINT SEATBELTS

All seats offer 3-point seatbelts. The front seats have pretensioners and force limiters, while second-row seats have an adjustable shoulder anchor and pretensioner on outboard seats.

LATCH

LATCH (Lower Anchors and Tethers for Children) includes lower anchors on all second-row seats and tether anchors on all second-row seats and the center seat in the third row.

TRD Sport shown in Magnetic Gray Metallic.

See numbered footnotes in Disclosures section.

For those out-of-the-way family outings.

The best memories aren't made with a Wi-Fi signal. So when it's time to get back to nature, Sequoia's got the strength you need to get the family — and their stuff — well beyond the city limits. With its fully boxed frame, available 381-hp 5.7L V8 and TOW/HAUL transmission mode, this SUV can tow up to 7400 lb.⁴ An automatic 6-speed ECT-i transmission features uphill and downhill shift logic, making it easier to take on those steeper grades too. It's like the only thing limiting your next family adventure is your imagination. Well, what are you waiting for?



TRAILER-SWAY CONTROL

When towing, winds or load undulation can cause trailer sway. Trailer-Sway Control (TSC)³⁴ is designed to apply brake pressure at individual wheels and manage engine torque to help the driver maintain control of the trailer.

Limited shown in Shoreline Blue Metallic.

Never tow beyond a vehicle's towing capacities. Always consult your *Owner's Manual*.⁴ Do not overload your vehicle. See *Owner's Manual* for weight limits and distribution. See numbered footnotes in Disclosures section.



POWERFUL V8 ENGINE

Sequoia comes standard with an all-aluminum 5.7L V8 that puts out 381 hp and 401 lb.-ft. of torque. Plus, this powerplant has received an Ultra Low Emission Vehicle II (ULEV-II) rating, because with power comes responsibility.

ADAPTIVE SUSPENSION

Maintaining ride height is important when the vehicle is carrying many passengers or a lot of cargo weight.³ That's why Sequoia's Platinum model features rear pneumatic cylinder height-controlled suspension — allowing you to automatically adjust ride height to compensate for changes in load. And Platinum's electronically controlled Adaptive Variable Suspension system offers driver-selectable settings for Comfort, Normal and Sport.

MULTI-MODE 4WD

This available system can turn mountains into molehills. Just turn the shift dial to engage the 4WD mode and let the Torsen[®] limited-slip center differential go to work. The differential locks up to get maximum traction on slippery or uneven surfaces.

Platinum shown in Blizzard Pearl.^{4,5}

See numbered footnotes in Disclosures section.



FRONT AND REAR SUSPENSION

Sequoia's independent double-wishbone front and rear suspension gives you the best of both worlds: responsive handling on pavement and a smoother ride off-road.⁴⁰ This sophisticated suspension utilizes low-pressure gas-filled shock absorbers and hollow stabilizer bars. Also enhancing Platinum's on-road performance is Adaptive Variable Suspension (AVS) with three settings ranging from "comfort" to "sport."

AUTOMATIC LIMITED-SLIP DIFFERENTIAL (AUTO LSD)⁴⁴

Sequoia's advanced Automatic Limited-Slip Differential (Auto LSD) uses the brakes to help reduce wheelspin and enhance traction performance on unpredictable road surfaces like sand or mud.

Platinum shown in Blizzard Pearl.⁴³

See numbered footnotes in Disclosures section.

SEQUOIA MODELS



SR5

Exterior

- LED high- and low-beam headlights with auto-off feature
- Integrated LED fog lights
- Color-keyed heated power outside mirrors
- 18-in. alloy wheels
- Power tilt/slide moonroof with sliding sunshade

Interior

- Automatic three-zone front and rear climate control with air filter
- Optitron instrumentation with speedometer and tachometer; LCD display with odometer and tripmeters
- Easy-clean fabric-trimmed front seats; 8-way power-adjustable driver's seat; 4-way adjustable front passenger seat
- Easy-clean fabric-trimmed 40/20/40 split, sliding, reclining, fold-flat second-row seat with one-touch access to third-row seat
- Multi-function center console with two front and two rear cup holders, two 12V auxiliary power outlets, sliding covered armrest and storage compartment

Safety/Convenience

- Toyota Safety Sense™ P (TSS-P)²⁵ — includes Pre-Collision System²⁶ with Pedestrian Detection²⁷ (PCS w/PD), Lane Departure Alert (LDA)²⁸ with Sway Warning System (SWS)²⁹, Automatic High Beams (AHB)³⁰ and Dynamic Radar Cruise Control (DRCC)³¹
- Blind Spot Monitor (BSM)³⁵ with Rear Cross-Traffic Alert (RCTA)³⁶
- Star Safety System™

Options

- Premium Package — includes 8-passenger leather trimmed seats, heated 10-way power-adjustable driver's seat and 4-way power-adjustable front passenger seat, power reclining¹⁹ and fold-flat third-row seating, Entune™ Premium Audio with Integrated Navigation¹⁶ and Entune® App Suite,¹⁷ auto-dimming rearview mirror with compass and HomeLink^{®24} universal transceiver



TRD Sport

Adds to or replaces features on SR5

Exterior

- Satin-black TRD Sport front door logos
- Gloss-black heated power outside mirrors
- 20-in. TRD Sport black alloy wheels
- TRD Sport performance-tuned Bilstein^{®18} shocks
- TRD Sport performance-tuned sway bars

Interior

- 7-passenger seating with easy-clean fabric-trimmed front seats and second-row captain's chairs; 8-way power-adjustable driver's seat; 4-way adjustable front passenger seat

Options

- TRD Sport Premium Package — includes 7-passenger Black leather-trimmed seats with contrast stitching, heated 10-way power-adjustable driver's seat and 4-way power-adjustable front passenger seat, power reclining¹⁹ and fold-flat third-row seating, Entune™ Premium Audio with Integrated Navigation¹⁶ and Entune® App Suite,¹⁷ auto-dimming rearview mirror with compass and HomeLink^{®24} universal transceiver



Limited

Adds to or replaces features on SR5

Exterior

- Chrome auto-dimming heated power outside mirrors with power folding feature and turn signal indicators
- Power liftgate with jam protection
- 20-in. alloy wheels

Interior

- Entune™ Premium Audio with Integrated Navigation¹⁶ and Entune® App Suite¹⁷
- Leather-trimmed and heated front seats; 10-way power-adjustable driver's seat; 4-way power-adjustable front passenger seat
- Leather-trimmed 40/20/40 split, sliding, reclining,¹⁹ fold-flat second-row seat with one-touch access to third-row seat
- Leather-trimmed tilt/telescopic steering wheel with audio, voice-command, Siri® Eyes Free¹³ and Bluetooth^{®11} hands-free phone controls, Multi-Information Display (MID), Dynamic Radar Cruise Control (DRCC)³¹ and Lane Departure Alert (LDA)²⁸ controls
- Auto-dimming rearview mirror with compass and HomeLink^{®24} universal transceiver

Options

- Rear-seat Blu-ray Disc™ player with 9-in. display, two wireless headphones,²³ wireless remote and rear audio system with 120V AC power outlet and RCA jacks
- Premium JBL^{®22} Entune® Audio and Convenience Package — includes Entune™ Premium JBL Synthesis^{®22} audio with Integrated Navigation¹⁶ and Entune® App Suite,¹⁷ two-position power memory driver's seat and memory outside mirrors
- 7-passenger seating with leather trim and second-row captain's chairs



Platinum

Adds to or replaces features on Limited

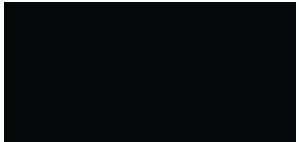
Exterior

- Chrome auto-dimming heated power outside mirrors with power folding, reverse tilt-down and memory features, turn signal indicators and puddle lights
- 20-in. diamond-cut-finish alloy wheels

Interior

- Entune™ Premium JBL Synthesis^{®22} audio with Integrated Navigation¹⁶ and Entune® App Suite¹⁷
- Rear-seat Blu-ray Disc™ player with 9-in. display, two wireless headphones,²³ wireless remote and rear audio system with 120V AC power outlet and RCA jacks
- Perforated leather-trimmed heated and ventilated front seats; 10-way power-adjustable driver's seat with power thigh and lumbar support; 4-way power-adjustable front passenger seat
- 7-passenger seating with perforated leather-trimmed and heated second-row captain's chairs and multi-function center console
- Perforated leather-trimmed second-row heated captain's chairs with multi-function center console
- Perforated leather-trimmed 60/40 split, power reclining,¹⁹ fold-flat third-row seat with folding headrests

Color



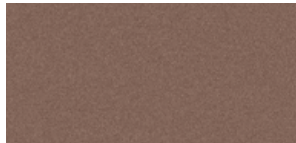
Midnight Black Metallic



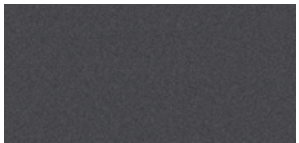
Shoreline Blue Pearl



Sizzling Crimson Mica



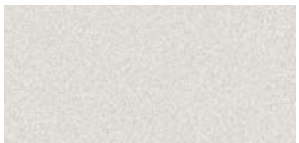
Toasted Walnut Pearl



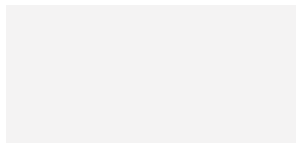
Magnetic Gray Metallic



Silver Sky Metallic

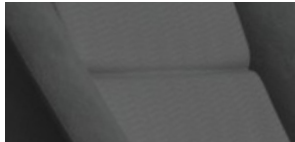


Blizzard Pearl⁴³



Super White⁴⁵

Trim

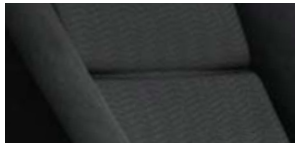


SR5 easy-clean fabric
in Graphite

Also available in



Sand Beige



TRD Sport in Black



Limited leather trim
in Graphite

Also available in



Sand Beige



Platinum perforated leather
trim in Graphite

Also available in



Sand Beige



Red Rock

Wheels



SR5 18-in. alloy wheel



TRD Sport 20-in.
black alloy wheel



Limited 20-in.
alloy wheel



Platinum 20-in.
diamond-cut-finish
alloy wheel

ACCESSORIES

Because no two families are alike. A wide range of Genuine Toyota Accessories are available to help you make your Sequoia your own. Considering how appealing Sequoia is to begin with, these quality products will be like icing on the cake. Some accessories may not be available in all regions of the country. See your Toyota dealer for details.

Alloy wheel locks
All-weather cargo mat³
All-weather floor liners⁴⁶
Cargo cover³
Cargo net — envelope³
Cargo tote³

Carpet cargo mat³
Carpet floor mats⁴⁶
Coin holder/ashtray cup
Doorsill protectors
Emergency assistance kit
First aid kit

Front skid plate
Glass Breakage Sensor (GBS)⁴⁷
Hood protector
Paint protection film⁴⁸ — hood and fender
Trailer ball and ball mount⁴
TRD performance air filter

TRD performance brake pads
TRD performance oil cap
TRD performance oil filter
TRD radiator cap
Universal tablet holder⁴⁹
Wireless headphones²³



All-weather cargo mat³



All-weather floor liners⁴⁶



Carpet cargo mat³



Cargo cover³



Cargo net — envelope³



Doorsill protectors



Front skid plate



Paint protection film⁴⁸

SPECIFICATIONS

MECHANICAL AND PERFORMANCE	SR5	TRD SPORT	LIMITED	PLATINUM
Engine				
5.7-Liter i-FORCE V8 DOHC 32-Valve with Dual Independent Variable Valve Timing with intelligence (VVT-i); 381 hp @ 5600 rpm; 401 lb.-ft. @ 3600 rpm	Standard	Standard	Standard	Standard
EMISSION RATING				
Ultra Low Emission Vehicle II (ULEV-II)	Standard	Standard	Standard	Standard
TRANSMISSION				
6-speed Electronically Controlled automatic Transmission with intelligence (ECT-i); sequential shift mode and uphill/downhill shift logic; TOW/HAUL Mode	Standard	Standard	Standard	Standard
DRIVETRAIN				
Rear-Wheel Drive (RWD)	Standard	Standard	Standard	Standard
Multi-Mode 4WD with Torsen ^{®1} limited-slip center differential with locking feature (4x4 only)	Available	Available	Available	Available
BODY CONSTRUCTION				
Reinforced body-on-frame construction	Standard	Standard	Standard	Standard
SUSPENSION				
Front high-mounted coil-spring independent double-wishbone front suspension with low-pressure gas-filled shock absorbers and hollow stabilizer bar; rear coil-spring independent double-wishbone suspension with low-pressure gas-filled shock absorbers and hollow stabilizer bar	Standard	NA	Standard	NA
Front high-mounted coil-spring independent double-wishbone front suspension with TRD Sport performance-tuned Bilstein ^{®18} shock absorbers, and TRD Sport performance-tuned sway bar; rear coil-spring independent double-wishbone suspension with TRD Sport performance-tuned Bilstein ^{®18} shock absorbers, and TRD Sport performance-tuned sway bar	NA	Standard	NA	NA
Front high-mounted coil-spring independent double-wishbone front suspension with low-pressure gas-filled electronically actuated shock absorbers and hollow stabilizer bar; rear pneumatic cylinder height-controlled independent double-wishbone suspension with low-pressure gas-filled electronically actuated shock absorbers and hollow stabilizer bar	NA	NA	NA	Standard
Electronic Modulated Rear Air Suspension	NA	NA	NA	Standard
Adaptive Variable Suspension (AVS) system (which controls the damping force of the shock absorbers for all four wheels in accordance with driving and road surface conditions)	NA	NA	NA	Standard
STEERING				
Engine speed-sensing Variable Flow Control (VFC) power-assisted rack-and-pinion	Standard	Standard	Standard	Standard
Turning circle diameter, curb to curb (ft.)	38.1	38.1	38.1	38.1
BRAKES				
Power-assisted 4-wheel Anti-lock Brake System (ABS) with Electronic Brake-force Distribution (EBD) and Brake Assist (BA) ²	Standard	Standard	Standard	Standard
WHEELS				
18-inch x 8-inch aluminum alloy	Standard	NA	NA	NA
20-inch x 8-inch aluminum alloy	NA	Standard	Standard	Standard
EXTERIOR DIMENSIONS (in.)				
Overall width/height/length	79.9/77.0/205.1	79.9/77.0/205.1	79.9/77.0/205.1	79.9/77.0/205.1
Wheelbase	122.0	122.0	122.0	122.0
Track (front/rear)	67.9/69.1	67.9/69.1	67.9/69.1	67.9/69.1
INTERIOR DIMENSIONS (front/second-row/third-row seats) (in.)				
Head room with moonroof	34.8/34.9/34.5	34.8/34.9/34.5	34.8/34.9/34.5	34.8/34.9/34.5
Shoulder room	66.4/65.6/65.7	66.4/65.6/65.7	66.4/65.6/65.7	66.4/65.6/65.7
Hip room	62.5/59.9/50.4	62.5/59.9/50.4	62.5/59.9/50.4	62.5/59.9/50.4
Leg room	42.5/40.9/35.3	42.5/40.9/35.3	42.5/40.9/35.3	42.5/40.9/35.3

See numbered footnotes in Disclosures section.

SPECIFICATIONS (continued)

OFF-HIGHWAY	SR5	TRD SPORT	LIMITED	PLATINUM
Approach/departure angle (degrees) (4x2; 4x4)	27/20; 27/21	27/20; 27/21	27/20; 27/21	27/20; 27/21
Ground clearance (in.) (4x2/4x4)	9.9/10.0	9.9/10.0	9.9/10.0	9.6/9.6
WEIGHTS AND CAPACITIES				
Curb weight (lb.) (4x2/4x4)	5730/5985	5730/5985	5730/5985	5750/6000
Gross Vehicle Weight Rating (GVWR) (lb.) (4x2/4x4)	7100/7300	7100/7300	7100/7300	7100/7300
Gross Combined Weight Rating (GCWR) (lb.) (4x2/4x4)	13,600/13,600	13,600/13,600	13,600/13,500	13,400/13,500
Cargo volume ³ (cu. ft.) (behind front/second-row/third-row seats)	120.1/66.6/18.9	120.1/66.6/18.9	120.1/66.6/18.9	120.1/66.6/18.9
Seating capacity (standard/available)	8	7	8/7	7/NA
Fuel tank (gal.)	26.4	26.4	26.4	26.4
TOWING (SAE J2807 towing rating-compliant) ⁴				
Towing hitch receiver and wiring harness with 4-/7-pin connector	Standard	Standard	Standard	Standard
Towing capacity (lb.) (4x2/4x4)	7400/7100	7400/7100	7400/7100	7200/7000
TIRES				
Type – Mud-and-Snow-rated radials	Standard	Standard	Standard	Standard
Spare – Full-size, mounted under body	Standard	Standard	Standard	Standard
P275/65R18 114T	Standard	NA	NA	NA
P275/55R20 111H	NA	Standard	Standard	Standard
MILEAGE ESTIMATES (mpg city/highway/combined) ⁵ (4x2; 4x4)				
	13/18/15; 13/17/14	13/18/15; 13/17/14	13/18/15; 13/17/14	13/18/15; 13/17/14

FEATURES⁶

EXTERIOR	SR5	TRD SPORT	LIMITED	PLATINUM	SR5	TRD SPORT	LIMITED	PLATINUM	
LED low- and high-beam headlights with auto on/off feature	S	S	S	S	20-in. machined-finish split-spoke with silver accent alloy wheels with P275/55R20 111H tires	—	—	—	S
LED Daytime Running Lights (DRL) with auto on/off feature	S	S	S	S	Washer-linked variable intermittent windshield wipers and intermittent rear wiper	S	S	S	S
Integrated LED fog lights with dark-silver surround	S	—	—	—	One-touch 3-blink turn signal indicators	S	S	S	S
Integrated LED fog lights with chrome surround	—	S	S	S	Windshield wiper de-icer	S	S	S	S
Chrome grille surround with dark-silver insert and accent	S	—	S	—	Privacy glass on rear side, quarter and liftgate windows	S	S	S	S
Chrome grille surround with gloss-black insert and accent	—	S	—	—	Power liftgate with jam protection	—	—	S	S
Chrome grille surround with chrome insert and accent	—	—	—	S	Darkened rear taillight bezel	S	S	S	S
Lower bumper opening with dark-silver surround	S	—	—	—	Chrome raised Sequoia logo in color-keyed surround on liftgate	S	—	—	—
Lower bumper opening with chrome surround	—	S	S	S	Chrome raised Sequoia logo with gloss-black base in color-keyed surround on liftgate	—	S	—	—
Color-keyed heated power outside mirrors	S	—	—	—	Dark-silver embossed Sequoia logo with chrome surround on liftgate	—	—	S	S
Gloss-black heated power outside mirrors	—	S	—	—	Color-keyed rear spoiler with LED center high-mount stop light	S	S	S	S
Chrome auto-dimming heated power outside mirrors with power folding feature and turn signal indicators	—	—	S	—	Chrome body side molding	—	—	S	S
Chrome auto-dimming heated power outside mirrors with power folding, reverse tilt-down and memory features, turn signal indicators and puddle lights	—	—	—	S	Roof rack – silver color	S	—	S	S
Color-keyed door handles	S	S	—	—	Roof rack – black color	—	S	—	—
Chrome door handles	—	—	S	S	Running boards – black	S	S	—	—
Satin-black TRD Sport front door logos	—	S	—	—	Running boards – black with color-keyed surround	—	—	S	S
Power tilt/slide moonroof with sliding sunshade	S	S	S	S	Engine and transfer case skid plates (transfer case 4x4 only)	S	S	S	S
18-in. 5-spoke alloy wheels with P275/65R18 114T tires	S	—	—	—	Adaptive Variable Suspension (AVS)	—	—	—	S
20-in. TRD Sport black alloy wheels with P275/55R20 111H tires	—	S	—	—	Electronically Modulated Rear Air Suspension	—	—	—	S
20-in. machined-finish split-spoke with dark-silver accent alloy wheels with P275/55R20 111H tires	—	—	S	—	TRD Sport performance-tuned Bilstein ^{®18} front and rear shock absorbers	—	S	—	—
					TRD Sport performance-tuned front and rear sway bars	—	S	—	—

See numbered footnotes in Disclosures section.

S = Standard O = Optional — = Not Available P = Feature is available as part of an option package.

FEATURES⁶ (continued)

INTERIOR	SR5	TRD SPORT	LIMITED	PLATINUM	SR5	TRD SPORT	LIMITED	PLATINUM
Automatic three-zone front and rear climate control with air filter	S	S	S	S	—	—	—	S
Entune™ Audio Plus — includes 6.1-in. high-resolution touch-screen display, AM/FM/HD Radio, ^{TM7} CD player, auxiliary port, USB 2.0 port ⁸ with iPod ^{®9} connectivity and control, advanced voice recognition, ¹⁰ hands-free phone capability, phone book access and music streaming ¹¹ via Bluetooth ^{®11} wireless technology, Scout [®] GPS Link compatible, ¹² Siri [®] Eyes Free, ¹³ and SiriusXM [®] Satellite Radio ¹⁴ with 3-month All Access trial. ¹⁵ See toyota.com/entune for details.	S	S	—	—	S	S	—	—
Entune™ Premium Audio with Integrated Navigation ¹⁶ and Entune [®] App Suite ¹⁷ — includes 6.1-in. high-resolution touch-screen display, AM/FM cache radio, HD Radio, ^{TM7} CD player, auxiliary port, USB 2.0 port ⁸ with iPod ^{®9} connectivity and control, advanced voice recognition, ¹⁰ hands-free phone capability, phone book access and music streaming ¹¹ via Bluetooth ^{®11} wireless technology, Siri [®] Eyes Free, ¹³ HD Radio ^{TM7} Predictive Traffic and Doppler Weather overlay, SiriusXM [®] Satellite Radio ¹⁴ with 3-month All Access trial. ¹⁵ Entune [®] App Suite. ¹⁷ See toyota.com/entune for details.	P	P	S	—	—	—	—	S
Entune™ Premium JBL Synthesis ^{®22} audio with Integrated Navigation ¹⁶ and Entune [®] App Suite ¹⁷ — includes 6.1-in. high-resolution touch-screen with split-screen display, AM/FM cache radio, HD Radio, ^{TM7} CD player, 14 JBL ^{®22} speakers including subwoofer amplifier, auxiliary port, USB 2.0 port ⁸ with iPod ^{®9} connectivity and control, advanced voice recognition, ¹⁰ hands-free phone capability, phone book access and music streaming ¹¹ via Bluetooth ^{®11} wireless technology, Siri [®] Eyes Free, ¹³ HD Radio ^{TM7} Predictive Traffic and Doppler Weather overlay, and SiriusXM [®] Satellite Radio ¹⁴ with 3-month All Access trial. ¹⁵ See toyota.com/entune for details.	—	—	P	S	S	S	S	—
Multi-Information Display (MID) with outside temperature, instant/average fuel economy and distance to empty	S	S	S	S	—	—	S	S
Rear-seat Blu-ray Disc™ player with 9-inch display, two wireless headphones, ²³ wireless remote and rear audio system with 120V AC power outlet and RCA jacks	—	—	O	S	—	—	—	S
Easy-clean fabric-trimmed front seats; 8-way power-adjustable driver's seat; 4-way adjustable front passenger seat	S	S	—	—	S	S	S	S
Leather-trimmed and heated front seats; 10-way power-adjustable driver's seat; 4-way power-adjustable front passenger seat	P	P	S	—	S	S	—	—
Perforated leather-trimmed heated and ventilated front seats; 10-way power-adjustable driver's seat with power thigh and lumbar support; 4-way power-adjustable front passenger seat	—	—	—	S	—	—	O	S
8-passenger seating with easy-clean fabric	S	—	—	—	—	—	S	S
8-passenger seating with leather trim	P	—	S	—	—	—	—	—
7-passenger seating with easy-clean fabric and second-row captain's chairs	—	S	—	—	—	—	—	—
7-passenger seating with black leather trim and second-row captain's chairs	—	P	—	—	—	—	S	S
7-passenger seating with leather trim and second-row captain's chairs	—	—	O	—	S	S	S	S
7-passenger seating with perforated leather-trimmed and heated second-row captain's chairs and multi-function center console	—	—	—	—	—	—	—	S
Easy-clean fabric-trimmed 40/20/40 split, sliding, reclining, ¹⁹ fold-flat second-row seat with one-touch access to third-row seat	S	S	—	—	S	S	—	—
Leather-trimmed 40/20/40 split, sliding, reclining, ¹⁹ fold-flat second-row seat with one-touch access to third-row seat	P	P	S	—	P	P	S	—
Perforated leather-trimmed second-row heated captain's chairs with multi-function center console	—	—	—	S	—	—	—	S
Easy-clean fabric-trimmed 60/40 split, reclining, fold-flat third-row seat with folding headrests	S	S	—	—	S	S	—	—
Leather-trimmed power 60/40 split, power reclining, ¹⁹ fold-flat third-row seat with folding headrests	P	P	S	—	P	P	S	—
Perforated leather-trimmed power 60/40 split, power reclining, ¹⁹ fold-flat third-row seat with folding headrests	—	—	—	S	—	—	—	S
Leather-trimmed tilt/telescopic steering wheel with audio, Siri [®] Eyes Free ¹³ and Bluetooth ^{®11} hands-free phone controls	S	S	S	—	S	S	S	—
Leather-trimmed power tilt/telescopic steering wheel, wood-grain-style accents, memory, audio, Siri [®] Eyes Free ¹³ and Bluetooth ^{®11} hands-free phone controls	—	—	—	S	—	—	—	S
Multi-function remote keyless entry system with remote illuminated entry	S	S	S	S	S	S	S	S
Power windows with driver and front passenger one-touch auto up/down and jam protection	S	S	S	S	S	S	S	S
Power rear window with auto up/down, jam protection and defogger	S	S	S	S	S	S	S	S
Second- and third-row retractable window sunshades	—	—	S	S	—	—	S	S
Power door locks with shift-linked automatic lock/unlock feature	S	S	S	S	S	S	S	S
Auto-dimming rearview mirror with compass and HomeLink ^{®24} universal transceiver	P	P	S	S	P	P	S	S
Overhead console with storage and maplights	S	S	S	S	S	S	S	S
Multi-function center console with two front and two rear cup holders, three 12V auxiliary power outlets, sliding covered armrest and storage compartment	S	S	—	—	S	S	—	—
Multi-function center console with two front and two rear cup holders, two 12V auxiliary power outlets, one 120V AC power outlet, RCA jacks and sliding covered armrest and storage compartment	—	—	O	S	—	—	O	S
Front cup holders with chrome trim in center console	—	—	S	S	—	—	S	S
Cargo area 12V auxiliary power outlet and grocery bag hooks	S	S	S	S	S	S	S	S
Dual extendable sun visors with vanity mirrors	S	S	—	—	S	S	—	—
Dual extendable sun visors with illuminated vanity mirrors and secondary visors	—	—	S	S	—	—	S	S
16 (18 on Platinum) cup and bottle holders (total)	S	S	S	S	S	S	S	S

See numbered footnotes in Disclosures section.

S = Standard O = Optional — = Not Available P = Feature is available as part of an option package.

SAFETY AND CONVENIENCE

	SR5	TRD SPORT	LIMITED	PLATINUM		SR5	TRD SPORT	LIMITED	PLATINUM
Toyota Safety Sense™ P (TSS-P) ²⁵ — includes Pre-Collision System ²⁶ with Pedestrian Detection ²⁷ (PCS w/PD), Lane Departure Alert (LDA) ²⁸ with Sway Warning System (SWS), ²⁹ Automatic High Beams (AHB) ³⁰ and Dynamic Radar Cruise Control (DRCC) ³¹	S	S	S	S	Driver and front passenger seatbelt pretensioners with force limiters	S	S	S	S
STAR SAFETY SYSTEM ™ Star Safety System™ — includes Vehicle Stability Control (VSC), ³² Traction Control (TRAC), Anti-lock Brake System (ABS), Electronic Brake-force Distribution (EBD), Brake Assist (BA) ² and Smart Stop Technology® (SST). ³³ At speeds greater than five miles per hour, when the accelerator is depressed first and the brakes are then applied firmly for longer than one-half second, Smart Stop Technology® is designed to help the driver bring the vehicle to a stop.	S	S	S	S	LATCH (Lower Anchors and Tethers for CHildren) includes lower anchors on all second-row seats and tether anchors on all second-row seats and center third-row seat	S	S	S	S
Driver and front passenger Advanced Airbag System ³⁴	S	S	S	S	Child-protector rear door locks and power window lockout	S	S	S	S
Driver and front passenger seat-mounted side airbags, driver and front passenger knee airbags and all-row side curtain airbags ³⁴	S	S	S	S	Front energy-absorbing crumple zone	S	S	S	S
Driver and front passenger seat-mounted side airbags, driver and front passenger knee airbags, and all-row Roll-sensing Side Curtain Airbags (RSCA) ³⁴ (4x4 models only)	S	S	S	S	Side-impact door beams	S	S	S	S
Driver and front passenger seatbelt warning sensor	S	S	S	S	Energy-dissipating interior trim	S	S	S	S
3-point seatbelts for all seating positions; driver-side Emergency Locking Retractor (ELR) and Automatic/ Emergency Locking Retractor (ALR/ELR) on all passenger belts	S	S	S	S	Blind Spot Monitor (BSM) ³⁵ lane change assist	S	S	S	S
					Rear Cross-Traffic Alert (RCTA) ³⁶	S	S	S	S
					Two-position power memory driver's seat and memory outside mirrors	—	—	P	S
					Front and rear parking assist sonar ³⁷	S	S	S	S
					Trailer-Sway Control (TSC) ³⁸	S	S	S	S
					Anti-theft system with engine immobilizer ³⁹	S	S	S	S

PACKAGES

	SR5	TRD SPORT	LIMITED	PLATINUM
Premium Package — includes 8-passenger leather-trimmed seats; heated 10-way power-adjustable driver's seat and 4-way power-adjustable front passenger seat; power reclining ¹⁹ and fold-flat third-row seating; Entune™ Premium Audio with Integrated Navigation ¹⁶ and Entune® App Suite; ¹⁷ auto-dimming rearview mirror with compass and HomeLink® ²⁴ universal transceiver	P	—	—	—
TRD Sport Premium Package — includes 7-passenger Black leather-trimmed seats with contrast stitching; heated 10-way power-adjustable driver's seat and 4-way power-adjustable front passenger seat; power reclining ¹⁹ and fold-flat third-row seating; Entune™ Premium Audio with Integrated Navigation ¹⁶ and Entune® App Suite; ¹⁷ auto-dimming rearview mirror with compass and HomeLink® ²⁴ universal transceiver	—	P	—	—
Entune™ Premium JBL® ²² Audio and Convenience Package — includes Entune™ Premium JBL Synthesis® ²² audio with Integrated Navigation ¹⁶ and Entune® App Suite; ¹⁷ two-position power memory driver's seat and memory outside mirrors	—	—	P	S

OPTIONS

	SR5	TRD SPORT	LIMITED	PLATINUM
Entune™ Premium JBL Synthesis® ²² audio with Integrated Navigation ¹⁶ and Entune® App Suite ¹⁷ includes Entune™ Premium Audio and Entune® App Suite ¹⁷ plus 14 JBL® ²² speakers including subwoofer and amplifier	—	—	O	S
7-passenger seating with leather trim and second-row captain's chairs	—	P	O	S
Rear-seat Blu-ray Disc™ player with 9-in. display, two wireless headphones, ²³ wireless remote and rear audio system with 120V AC power outlet and RCA jacks	—	—	O	S

For more information about our available audio systems, as well as Bluetooth®¹¹-compatible features, please contact your local Toyota dealer.

DISCLOSURES

1. Torsen® is a registered trademark of Zexel Torsen, Inc. **2.** Brake Assist is designed to help the driver take full advantage of the benefits of ABS. It is not a substitute for safe driving practices. Braking effectiveness also depends on proper vehicle maintenance, and tire and road conditions. See *Owner's Manual* for additional limitations and details. **3.** Cargo and load capacity limited by weight and distribution. **4.** Before towing, confirm your vehicle and trailer are compatible, hooked up and loaded properly and that you have any necessary additional equipment. Do not exceed any Weight Ratings and follow all instructions in your *Owner's Manual*. The maximum you can tow depends on base curb weight plus the total weight of any cargo, occupants, and added vehicle equipment. "Added vehicle equipment" includes additional standard/optional equipment and accessories added by the manufacturer, dealers, and/or vehicle owners. The only way to be certain of your vehicle's exact curb weight is to weigh your vehicle without passengers or cargo. **5.** 2019 preliminary mpg estimates determined by Toyota. EPA estimates not available at time of posting. Actual mileage will vary. **6.** Toyota strives to build vehicles to match customer interest and thus they typically are built with popular options and option packages. Not all options/packages are available separately and some may not be available in all regions of the country. See toyota.com for information about options/packages commonly available in your area. If you would prefer a vehicle without any or with different options, contact your dealer to check for current availability or the possibility of placing a special order. **7.** HD Radio™ Technology manufactured under license from iBiquity Digital Corporation U.S. and Foreign Patents. HD Radio™ and the HD, HD Radio, and "Arc" logos are proprietary trademarks of iBiquity Digital Corp. **8.** May not be compatible with all mobile phones, MP3/WMA players and like models. **9.** iPod® and iPhone® are registered trademarks of Apple Inc. All rights reserved. **10.** Advanced voice recognition capabilities vary by head unit. **11.** The Bluetooth® word mark and logos are registered trademarks owned by Bluetooth SIG, Inc., and any use of such marks by Toyota is under license. A compatible Bluetooth®-enabled phone must first be paired. Phone performance depends on software, coverage and carrier. **12.** The Scout® GPS Link App is available only in Toyota vehicles equipped with Entune™ Premium systems. Once downloaded, the Scout® GPS Link App three-year trial begins upon your first connection with Entune® App Suite after you have synced with the Scout® GPS Link App with your Bluetooth®-enabled phone. Availability and accuracy of the information provided by Scout® GPS Link is dependent upon many factors. Use common sense when relying on information provided. Services and programming subject to change. Services not available in every city or roadway. Subscription required after end of three-year complimentary service. See toyota.com/entune for details. Scout® is a registered trademark of Telenav, Inc. **13.** Always drive safely, obey traffic laws and focus on the road while driving. Siri® is available on select iPhone®/iPad® models and requires Internet access. Siri® is not available in all languages or all areas and features vary by area. Some Siri® functionality and commands are not accessible in the vehicle. Data charges may apply. See apple.com and phone carrier for details. Siri® is a registered trademark of Apple Inc. **14.** SiriusXM® audio services require a subscription sold separately by Sirius XM Radio Inc. If you decide to continue service after your trial, the subscription plan you choose will automatically renew thereafter and you will be charged according to your chosen payment method at then-current rates. Fees and taxes apply. To cancel, you must call SiriusXM at 1-866-635-2349. See SiriusXM Customer Agreement for complete terms at www.siriusxm.com. All fees and programming subject to change. Not all vehicles or devices are capable of receiving all services offered by SiriusXM. Current information and features may not be available in all locations, or on all receivers. ©2018 Sirius XM Radio Inc. SiriusXM and all related marks and logos are trademarks of Sirius XM Radio Inc. **15.** Trial length and service availability may vary by model, model year or trim. **16.** Be sure to obey traffic regulations and maintain awareness of road and traffic conditions at all times. Availability and accuracy of the information provided by the navigation system is dependent upon many factors. Use common sense when relying on information provided. Services and programming subject to change. Services not available in every city or roadway. Updates may be available from your dealer at an additional cost. See *Owner's Manual* for details. **17.** Be sure to obey traffic regulations and maintain awareness of road and traffic conditions at all times. Apps/services vary by phone/carrier; functionality depends on many factors. Select apps use large amounts of data; you are responsible for charges. Apps and services subject to change at any time without notice. See toyota.com/entune for details. **18.** Bilstein® is a registered trademark of ThyssenKrupp Bilstein GmbH FED REP GERMANY. **19.** Do not allow passengers to sit in a seat that has been fully or severely reclined while driving. This feature is intended for use only when the vehicle is parked. While the vehicle is being driven, all vehicle occupants should have the seatback upright, sit well back in the seat and properly wear the seatbelts provided. In the event of a collision, the more the seat is reclined, the greater the risk of death or personal injury. See *Owner's Manual* for details. **20.** Yelp® is a registered trademark of Yelp, Inc. **21.** Slacker is a registered service mark of Slacker, Inc. **22.** JBL® is a registered trademark of Harman International Industries, Incorporated. **23.** Headphones are for passenger use only. Do not use while operating vehicle. **24.** HomeLink® and the HomeLink® house icon are registered trademarks of Gentex Corporation. **25.** Drivers are responsible for their own safe driving. Always pay attention to your surroundings and drive safely. System effectiveness is dependent on many factors including road, weather and vehicle conditions. See *Owner's Manual* for additional limitations and details. **26.** The TSS Pre-Collision System is designed to help avoid or reduce the crash speed and damage in certain frontal collisions only. It is not a substitute for safe and attentive driving. System effectiveness is dependent on many factors including road, weather and vehicle conditions. See *Owner's Manual* for additional limitations and details. **27.** The Pedestrian Detection system is designed to detect a pedestrian ahead of the vehicle, determine if impact is imminent and help reduce impact speed. It is not a substitute for safe and attentive driving. System effectiveness depends on many factors, such as speed, size and position of pedestrians, and weather, light and road conditions. See *Owner's Manual* for additional limitations and details. **28.** Lane Departure Alert is designed to read visible lane markers under certain conditions, and provide visual and audible alerts when lane departure is detected. It is not a collision-avoidance system or a substitute for safe and attentive driving. Effectiveness is dependent on many factors including road, weather and vehicle conditions. See *Owner's Manual* for additional limitations and details. **29.** Sway Warning is designed to provide a visual and audible alert if it detects a pattern of vehicle movement that might indicate driver inattention or drowsiness. It is not a collision-avoidance system or a substitute for safe and attentive driving. Effectiveness is dependent on many factors including road, weather and vehicle conditions. See *Owner's Manual* for additional limitations and details. **30.** Automatic High Beams operate at speeds above 25 mph. Factors such as a dirty windshield, weather, lighting and terrain limit effectiveness, requiring the driver to manually operate the high beams. See *Owner's Manual* for additional limitations and details. **31.** Dynamic Radar Cruise Control is designed to assist the driver and is not a substitute for safe and attentive driving practices. System effectiveness is dependent on many factors including road, weather and traffic conditions. See *Owner's Manual* for additional limitations and details. **32.** Vehicle Stability Control is an electronic system designed to help the driver maintain vehicle control under adverse conditions. It is not a substitute for safe and attentive driving practices. Factors including speed, road conditions, weather and driver steering input can all affect whether VSC will be effective in preventing a loss of control. See *Owner's Manual* for additional limitations and details. **33.** Smart Stop Technology® operates only in the event of certain contemporaneous brake and accelerator pedal applications. When engaged, the system will reduce power to help the brakes bring the vehicle to a stop. Factors including speed, road conditions and driver input can all impact stopping distance. Smart Stop Technology® is not a substitute for safe and attentive driving and does not guarantee instant stopping. See *Owner's Manual* for details. **34.** All the airbag systems are Supplemental Restraint Systems. All airbags (if installed) are designed to inflate only under certain conditions and in certain types of severe collisions. To decrease the risk of injury from an inflating airbag, always wear seatbelts and sit upright in the middle of the seat as far back as possible. Do not put objects in front of an airbag or around the seatback. Do not use a rearward-facing child seat in any front passenger seat. See *Owner's Manual* for additional limitations and details. **35.** Do not rely exclusively on the Blind Spot Monitor. Always look over your shoulder and use your turn signal. There are limitations to the function, detection and range of the monitor. See *Owner's Manual* for additional limitations and details. **36.** Do not rely exclusively on the Rear Cross-Traffic Alert system. Always look over your shoulder and use your mirrors to confirm rear clearance. There are limitations to the function, detection and range of the system. See *Owner's Manual* for additional limitations and details. **37.** Parking assist sonar is designed to warn drivers of potential collisions at speeds of 9 mph or less. Certain vehicle and environmental factors, including an object's shape and composition, may affect the ability of the parking assist sonar to detect it. Always look around outside the vehicle and use mirrors to confirm clearance. See *Owner's Manual* for additional limitations and details. **38.** Trailer-Sway Control (TSC) is an electronic system designed to help the driver maintain vehicle control under adverse conditions. It is not a substitute for safe driving practices. Factors including speed, road conditions, weather and driver steering input can all affect whether TSC will be effective in preventing a loss of control. See *Owner's Manual* for additional limitations and details. **39.** The engine immobilizer is a state-of-the-art anti-theft system. When you insert your key into the ignition switch or bring a Smart Key fob into the vehicle, the key transmits an electronic code to the vehicle. The engine will only start if the code in the transponder chip inside the key/fob matches the code in the vehicle's immobilizer. Because the transponder chip is embedded in the key/fob, it can be costly to replace. If you lose a key or fob, your Toyota dealer can help. Alternatively, you can find a qualified independent locksmith to perform high-security key services by consulting your local Yellow Pages or by contacting www.aloa.org. **40.** The Toyota Sequoia is designed to meet most off-road driving requirements, but off-roading is inherently dangerous and may result in vehicle damage. Toyota encourages responsible operation to help protect you, your vehicle and the environment. Seatbelts should be worn at all times. Do not allow passengers to ride in cargo area. **41.** Standard on Limited and Platinum. **42.** Standard on SR5 and Limited. Not available on Platinum. **43.** Extra-cost color. **44.** Auto LSD is an electronic, brake-actuated limited-slip differential that automatically activates when VSC is disengaged at low speeds. **45.** Not available on Platinum. **46.** This floor mat was designed specifically for use in your model and model year vehicle and SHOULD NOT be used in any other vehicle. To avoid potential interference with pedal operation, each mat must be secured with its fasteners. Do not install a floor mat on top of an existing floor mat. **47.** Available only for vehicles equipped with factory security and factory remote keyless entry system or Smart Key System. **48.** The Toyota Genuine Accessory Warranty will only apply when the installation is performed by a trained Toyota-approved installer. Please see dealer for details. **49.** The universal tablet holder is intended for passengers only. Drivers should always be sure to obey traffic regulations and maintain awareness of the road and traffic conditions at all times. Use of aftermarket accessories may pose an increased risk of injury to occupants in the event of an accident. Tablet sold separately.

CARS BUILT FOR THE WAY YOU LIVE

At Toyota, we build cars for how you live. From building advanced safety features designed to help prevent crashes to driving cross-country to understand how we can make your driving experience better, our work starts with understanding your needs. Building cars for how you live also means thinking about tomorrow — from fuel efficiency and environmental innovations, to things beyond cars, like a bicycle that you can control with your mind. And because what we learn building cars can help improve lives in other places, we do things like help communities rebuild their homes quickly after a disaster and work with soup kitchens to help them serve more people faster. Toyota. Built for how you live. Together we are going places.

WARRANTIES

Every Toyota Car, Truck and SUV is built to exceptional standards. And that's not idle boasting. We back it up with these Limited Warranty Coverages:

Basic: 36 months/36,000 miles (all components other than normal wear and maintenance items).

Powertrain: 60 months/60,000 miles (engine, transmission/transaxle, drive system, seatbelts and airbags).

Rust-Through: 60 months/unlimited miles (corrosion perforation of sheet metal).

Emissions: Coverages vary under Federal and California regulations. Refer to applicable *Warranty and Maintenance Guide* for details.

Accessories: For Genuine Toyota Accessories purchased at the time of the new vehicle purchase, the Toyota Accessory Warranty coverage is in effect for 36 months/36,000 miles from the vehicle's in-service date, which is the same coverage as the Toyota New Vehicle Limited Warranty.

Toyota strives to build vehicles to match customer interest and thus they typically are built with popular options and option packages. Not all options/packages are available separately and some may not be available in all regions of the country. See toyota.com for information about options/packages commonly available in your area. If you would prefer a vehicle without any or with different options, contact your dealer to check for current availability or the possibility of placing a special order.

For Genuine Toyota Accessories purchased after the new vehicle purchase the coverage is 12 months, regardless of mileage, from the date the accessory was installed on the vehicle, or the remainder of any applicable new vehicle warranty, whichever provides greater coverage.

You may be eligible for transportation assistance if it's necessary that your vehicle be kept overnight for repairs covered under warranty. Please see your authorized Toyota dealership for further details.

For complete details about Toyota's warranties, please visit www.toyota.com, refer to the applicable *Warranty and Maintenance Guide* or see your Toyota dealer.

Some vehicles are shown with available equipment. Seatbelts should be worn at all times. For details on vehicle specifications, standard features and available equipment in your area, contact your Toyota dealer. A vehicle with particular equipment may not be available at the dealership. Ask your Toyota dealer to help locate a specifically equipped vehicle.

All information presented herein is based on data available at the time of posting, is subject to change without notice and pertains specifically to mainland U.S.A. vehicles only. Prototypes shown. Actual production vehicles will vary.



For Toyota Mobility program details, go to www.toyota.com/mobility or call the Toyota Customer Assistance Center at 1-800-331-4331